

KS2

READING  
MUSEUM  
HANDS ON  
LEARNING



# Living On Oxford Road

# My local environment

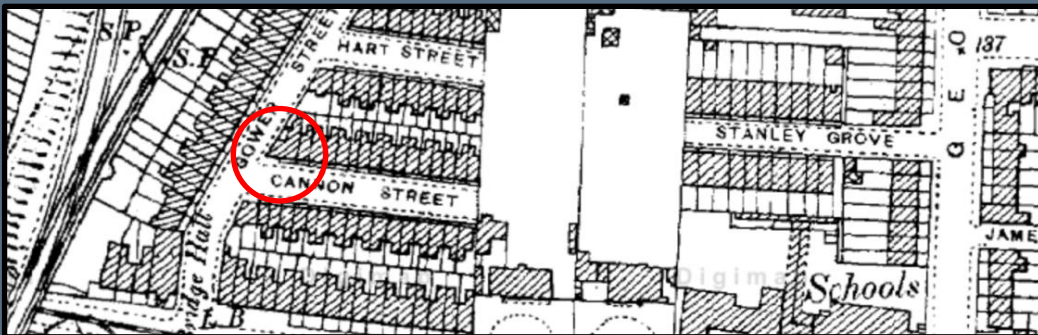
This house (pictured) is on the corner of Cannon Street and Gower Street.

It is covered in brick decoration which is architecturally known as **brick diapering**. It shows the date of the Victorian terraces which border the Oxford Road. Maybe you live in a house from this date?

What was happening in 1888?

- Queen Victoria was the monarch
- Milk chocolate had just been invented in 1875!
- In 1870 school was made compulsory for all 5 to 10 year olds
- Bicycling was becoming increasingly popular

*What did Reading look like in 1888? Here is that same house on an 1890s map:*

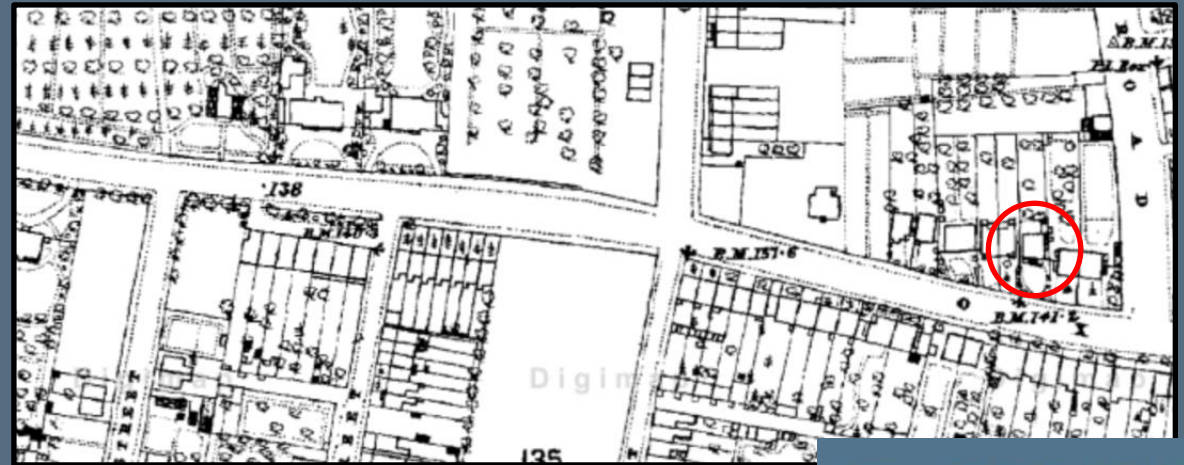




# 124 Oxford Road

This building was built in the 1850s, in a chalet style that was very popular with larger villa houses in the suburbs. Even though it is now a dentist, the chalet style is still clear to see (especially the shutters)! This building would have been here before the new terraces and was probably lived in by somebody quite wealthy, maybe a doctor or a lawyer?

The building to the left is also visible on the map, you can see how the two sides have changed over time. The house to the right looks much more like the building might have looked in the nineteenth century. The white colour on the ground floor section is called stucco.



# Victorian Terraces

These houses are older than the 1888 Victorian terraces. These are terraces from the **early nineteenth century**.

Look at the older sash windows and the pretty **fan light** (the semi-circular window) above the red front door. There are also **2 Doric columns** each side of the front door. These are a Classical feature popular at the time for showing wealth and style. You can also see the basement peeping out from below ground.

The different size windows show which rooms were most important. It is clear to see that the third-floor windows are much smaller and so demonstrate less important or fancy rooms in the house.



# Georgian Style Houses

Here you can see buildings of different ages. The white building and the red brick ones to the left, are the oldest ones in the picture. They are Georgian in style, with sash windows and the round arches in the windows and over the front doors.

The grey and red brick buildings to the right of the image, with the shops on the ground floor, are Victorian. Notice their **big bay windows** on the first floor. They were probably built at a similar time to the school. Maybe they were shops then too? And schoolchildren over 100 years ago also went there for snacks after a day at school?



# Modern buildings on Oxford Road

There are also some more modern buildings nearby, these flats were built in the 1970s and show how fashions changed. Notice the large windows and more simple style. These would have been built as lots of new projects were being built in Reading as the population grew in size.

Do you prefer the newer or the older buildings? What would you like to build in your local area?



# Activity 1: Investigate my Environment

Investigate the houses on your street!

Using the information in this resource, see if you can answer the questions below:

- What year were they made?

(Look for signs, plaques (labels) or street signs in the area that might tell you.)

- What architectural features do the houses near you have?

- If you couldn't find the year, based on the architectural features what decade do you think they were made in?

- What else is in your area?

(dentist, doctors, shops, schools, parks, playgrounds, etc)



# Activity 2: Chart your local area

Now that you have investigated your local area.

You can make a:

1. Map
2. Leaflet with all the information you have learned about your local area
3. Video presentation with a tour of your local area
4. Mood board with everything you have learned

All of these can be supported with drawings, information, thoughts, poems and music!